



LANIAKEA  
BATH COLLECTION

by **IXO**

LANIAKEA  
BATH COLLECTION





LANINKEN

XO

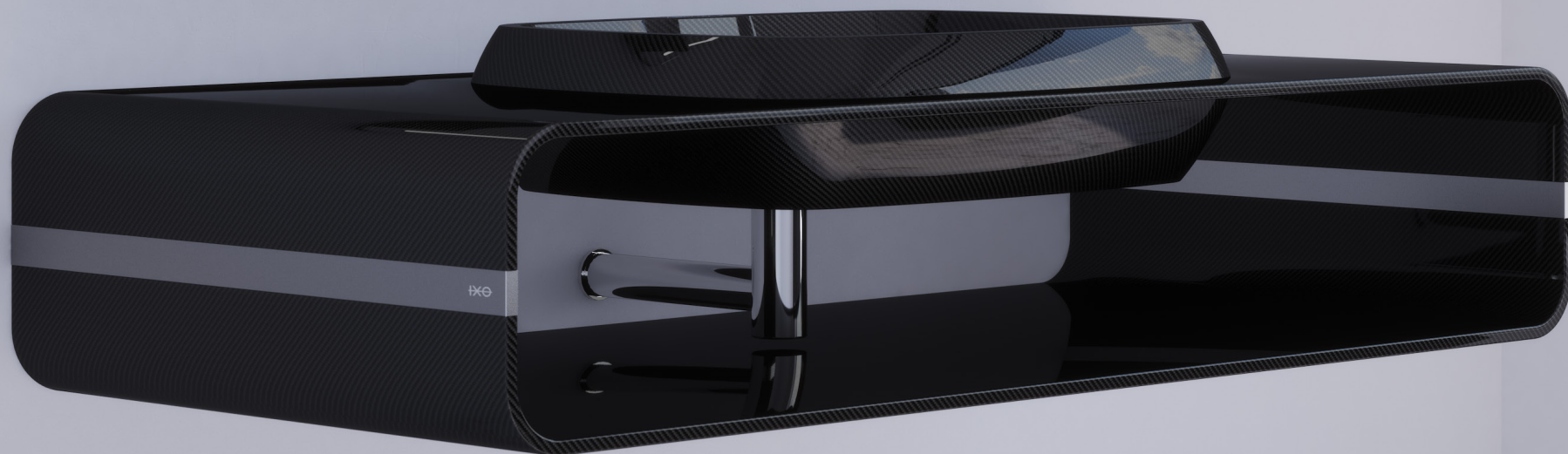
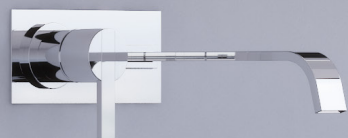




## LANIAKEA BATH COLLECTION

Bathtub  
Shower plate  
Sink  
Countertop  
Mirror





### Mirror ANIANI

High quality mirror with integrated carbon fiber shelf, led lighting automatic heater anti-steamy.

**Lengh** 1400 mm  
**Height** 700 mm  
**Depth** 136 mm

**Lengh** 700 mm  
**Height** 700 mm  
**Depth** 136 mm



### Sink + Countertop KAAWAN

Integrated sink and countertop made of carbon fiber. Fittings in machined aluminum

**Lengh** 1400 mm  
**Depth** 600 mm  
**Height** 315 mm



### Sink HOLOI

Also available sink only version, with corian countertop. Aluminium stripe connecting the two pieces of carbon fiber.

**Lengh** 668 mm  
**Depth** 516 mm  
**Height** 150 mm



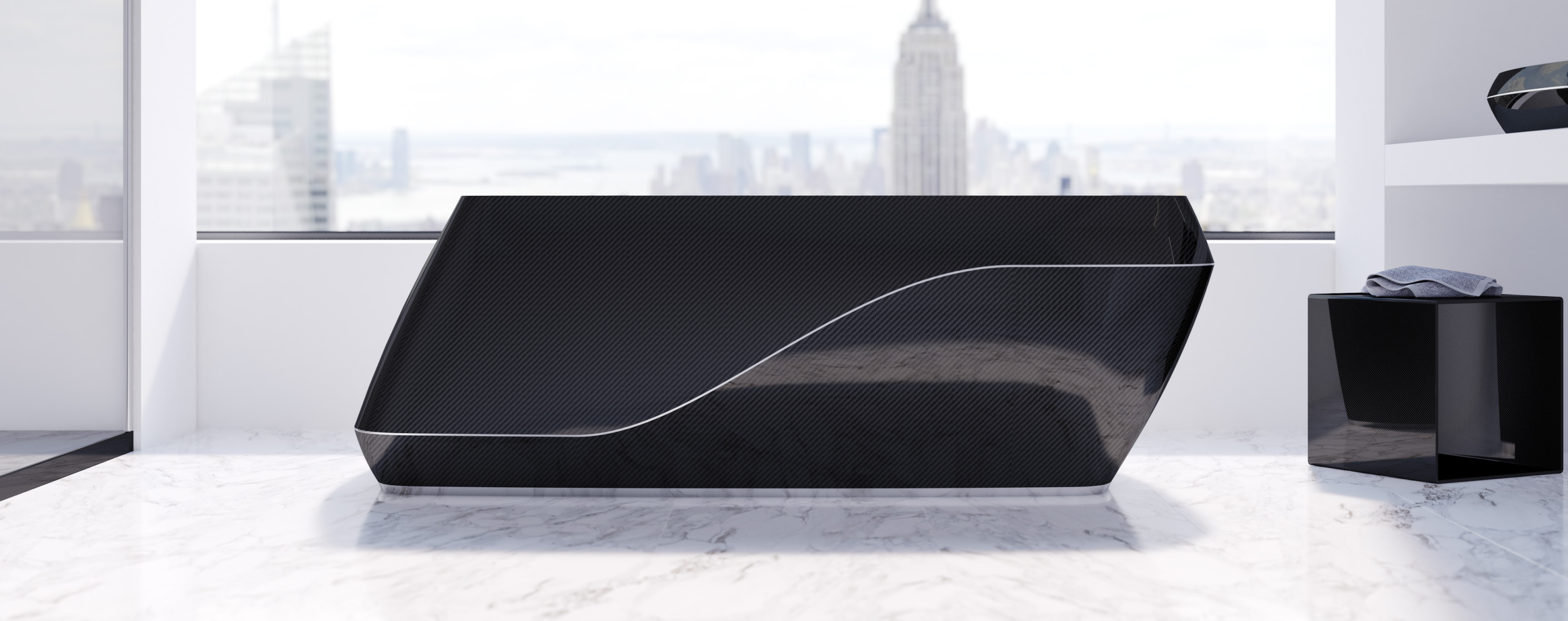
### Shower plate AUKA

Built in carbon fiber with a smooth slope. Exclusive drain in machined aluminium.

**Lengh** 1400 mm  
**Depth** 1000 mm  
**Height** 50 mm

**Lengh** 2000 mm  
**Depth** 1000 mm  
**Height** 50 mm





### Bathtub WELA

Built in carbon fiber with aluminium stripe connecting the two pieces. Exclusive heating system keep the water warm.

**Length** 1850 mm  
**Depth** 905 mm  
**Height** 625 mm





Manufacturing process





